

## **Wylam Parish Council**

### **Traffic Calming Measures**

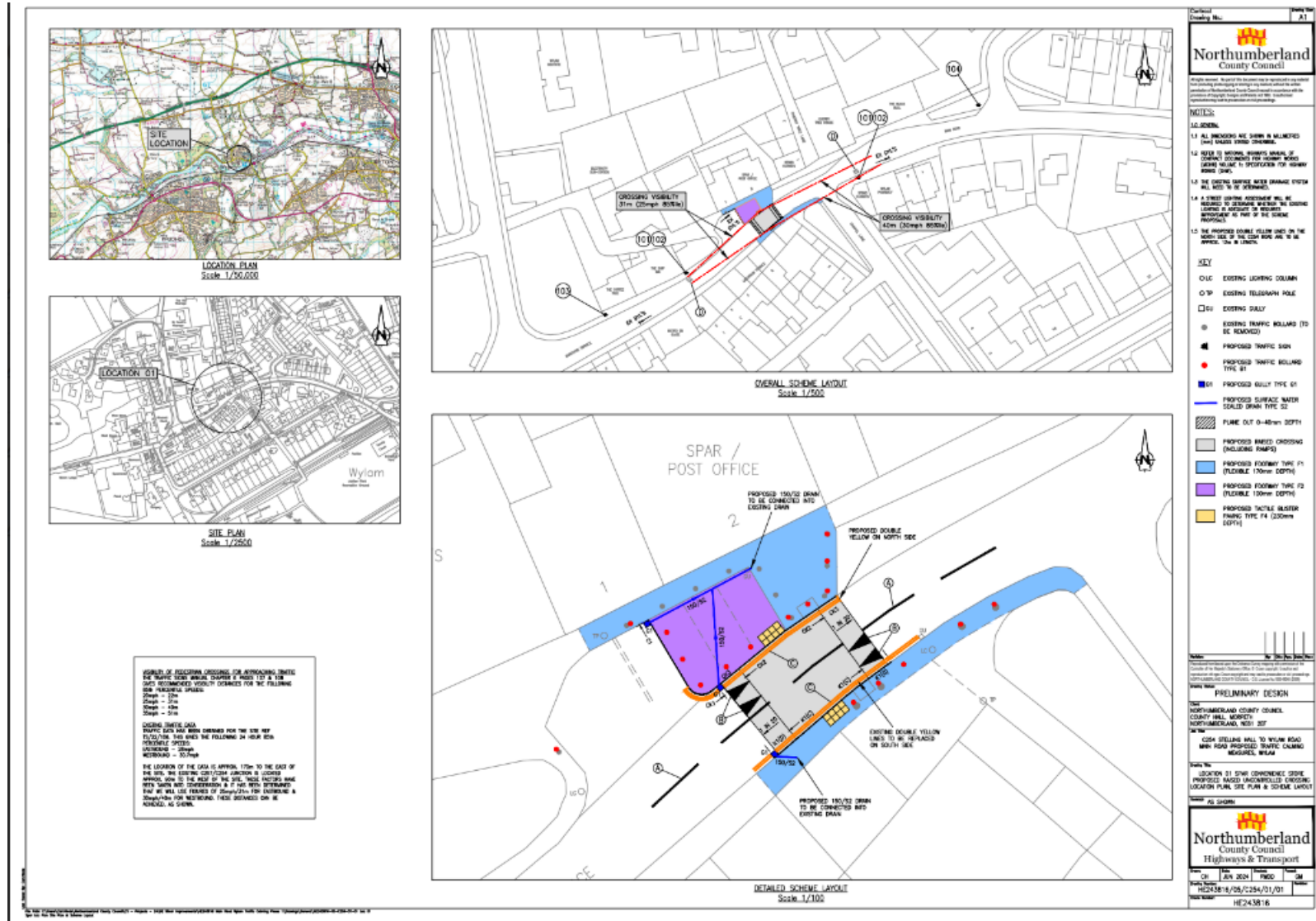
Wylam Parish Council submitted three priorities to Northumberland County Council for the Local Transport Plan Programme 2024/25.

Northumberland County Council confirmed the success of one priority:

*'The introduction of road safety and speed control measures in the vicinity of the Spar and along Main Road'*

Northumberland County Council have prepared options for traffic calming measures for the Spar and Main Road (near Fox and Hounds). Options are listed below for discussion.

Spar Crossing – Raised table with parking restrictions



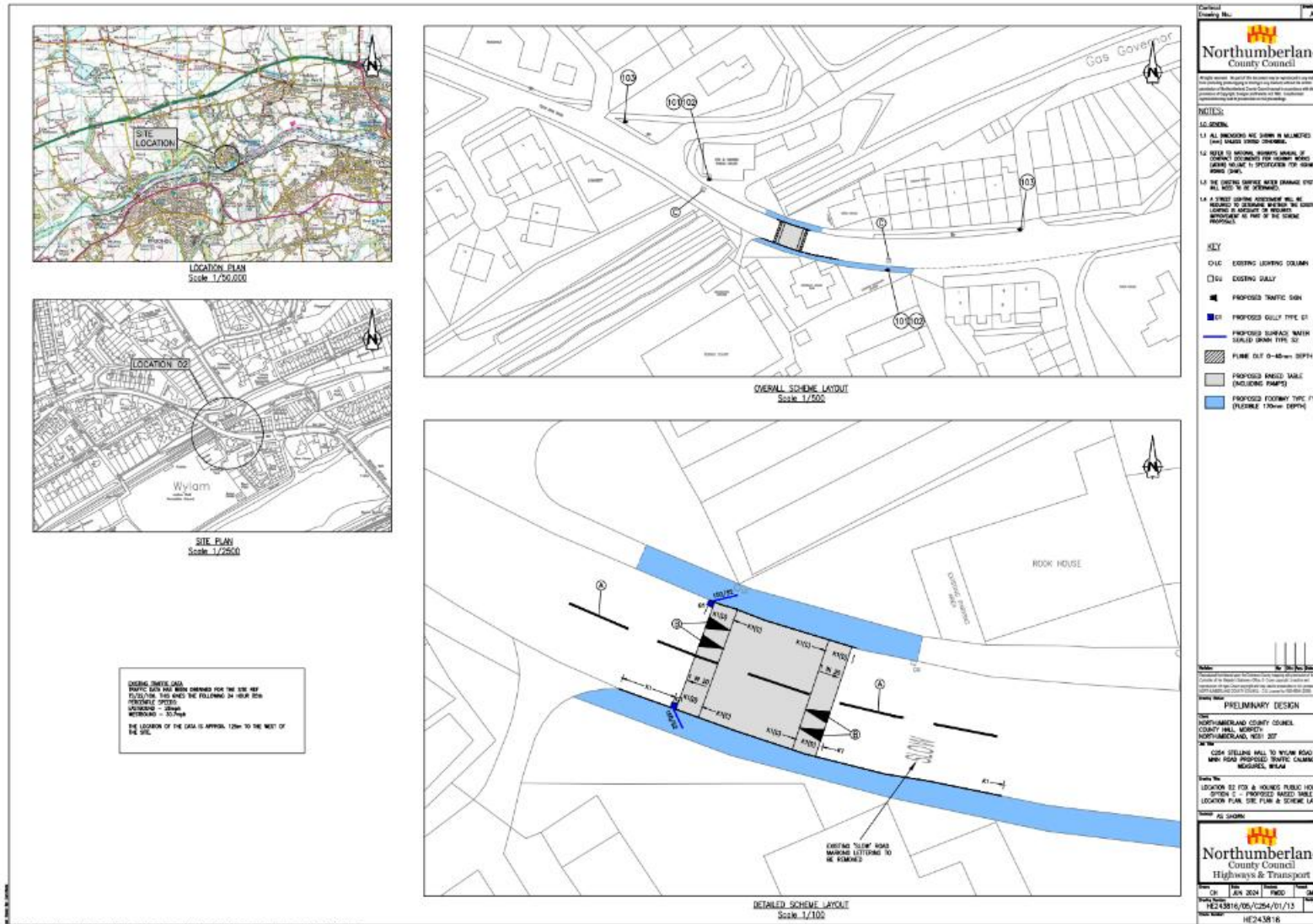
**NOTES:**

1. THE LOCATION OF THE CROSSING IS APPROXIMATELY 170m TO THE EAST OF THE SITE. THE EXISTING CURB/CHALK LINES ARE LOCATED APPROX. 170m TO THE WEST OF THE SITE. THE CROSSING SHALL BE RIMMED WITH SURFACE WATER DRAINAGE AS PART OF THE SCHEME DRAWINGS. THE CROSSING SHALL BE APPROX. 3m WIDE.

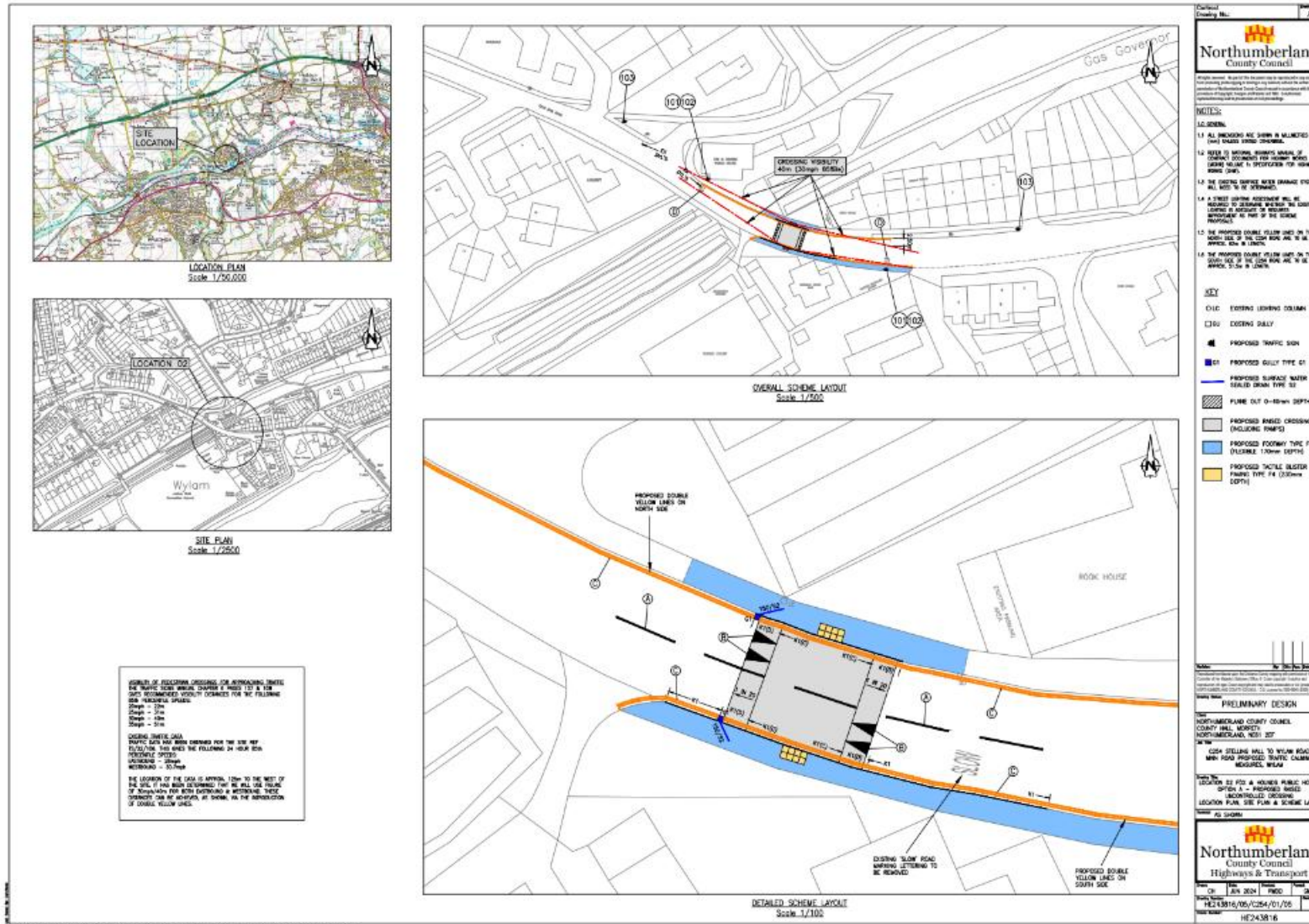
2. THE CROSSING SHALL BE APPROX. 3m WIDE. THE CROSSING SHALL BE APPROX. 3m WIDE. THE CROSSING SHALL BE APPROX. 3m WIDE.

3. THE CROSSING SHALL BE APPROX. 3m WIDE. THE CROSSING SHALL BE APPROX. 3m WIDE. THE CROSSING SHALL BE APPROX. 3m WIDE.

Main Road – Option A – Raised table with no parking restrictions



Main Road – Option B – Raised table with parking restrictions and tactile paving



Main Road – Option C – Raised table with Zebra Crossing, parking restrictions, tactile paving and flashing amber globes

